



The **KIMIKOLOR Ultra-thin Kimitop Overlay** is a specially designed product with cement, sand and chemical additives that can be applied in a thin layer and can be stamped or given another finish. It can be installed on new or old concrete surfaces and can be applied both indoors and outdoors. It is a one-component, cementitious coating that is used to obtain ultra-thin stamped, scratched, and stucco finishes, among others; it can be pigmented and oxidized.

## ADVANTAGES AND BENEFITS



- Excellent for reviving areas where existing concrete has been damaged.
- Good for covering new concretes that do not show the desired results.
- Excellent for repairing, avoiding having to completely demolish the surface.
- Excellent adherence and good flexibility.
- It comes ready to use, just add water.
- It may be applied in vertical and horizontal areas.

## YIELD



The following yields are approximate and may vary depending on the surface, surface conditions and application method.

Thickness:	Material:	Yield:
3 mm	20 kg	3.5 m <sup>2</sup> (11.5 ft <sup>2</sup> )
5 mm	20 kg	2.4 m <sup>2</sup> (7.9 ft <sup>2</sup> )
7 mm	20 kg	1.5 m <sup>2</sup> (4.9 ft <sup>2</sup> )

## MAINTENANCE



For maintenance we recommend using **KIMIKOLOR KIMIAKRIL ACRYLIC SEALER VARNISH** the protect surfaces and heighten the color. This sealer will help protect the floor and provide a dust separation from the concrete. It will also help protect the floor from wear by friction and gives a new look by reapplying once a year.





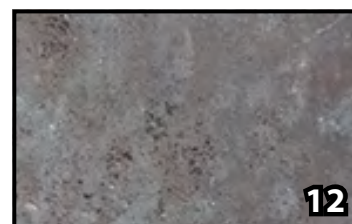
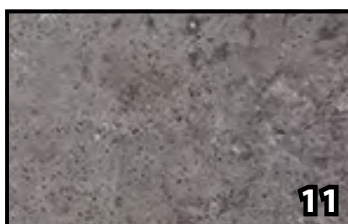
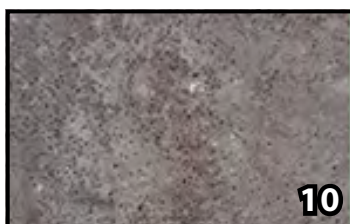
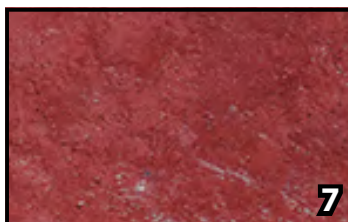
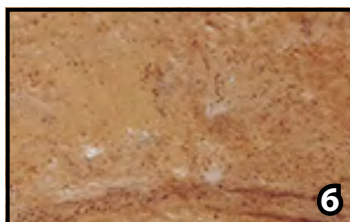
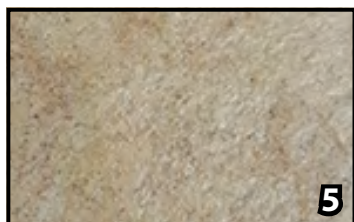
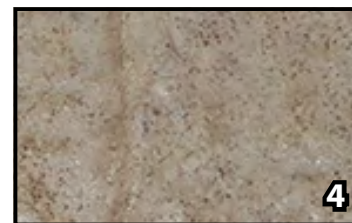
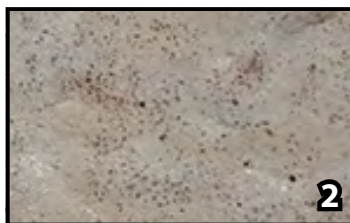
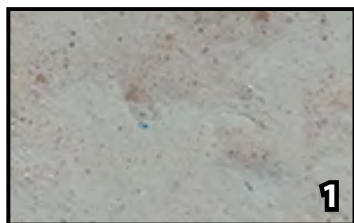
## APPLICATION PROCEDURE

- When opening the product, lightly shake it to avoid clumps that may have been caused by humidity.
- In a clean bucket pour 4 liters of water.
- Gradually add **Kimikolor Kimitop Overlay**, mix by hand or with a mechanical shaker until obtaining a soft paste without lumps. Note, the paste or mixture will be liquid at first, wait 5 minutes for the additives to activate before using.
- Moisten the surface with clean water, extend the mixed product over the surface considering the needed thickness, 3 to 7 mm. For better results, we recommend applying **KIMIKOLOR KIMIBOND Concrete Adhesive** to enhance adhesion and reduce the permeability of the surface.
- Apply a thin layer of mortar with the trowel, spreading the product widely as a primer to obtain a good adhesion to the surface and before it dries, apply the rest of the **Kimitop** on top. Spread using a squeegee or steel trowel to finish or if clumps form.
- If the surface is going to be stamped, do not wait for the overlay to bleed, because of the additives it contains, the bleeding will not be noticeable like in concrete, wait approximately 15 minutes. Note: it may take more or less time depending on whether it is an outdoor or indoor area. You can touch the overlay and if it does not stick to your fingers, it is the right time to stamp.

- Sprinkle **Kimirelease Powder Release Agent** or spray liquid release agent onto molds and mortar surface, then stamp.
- 24 hours later, wash with water and brushes to remove excess dust, always taking care to maintain the effect of the release agent's tonality.
- To add a final finish and after the concrete dries completely, we recommend applying **KIMIKOLOR Kimiakril Acrylic Sealer Varnish** in matte or glossy, either with a roller or brush. Note: it is advisable to wait 24 hours before applying sealer.







1. Blanco Concha KT-10
2. Sunset KT-14
3. Amarillo Tráfico KT-26

4. Dorado KT-18
5. Chukum KT-60
6. Mandarina KT-28

7. Rojo Tabique KT-58
8. Nuevo México KT-34
9. Concreto Aparente KT-42

10. Gray KT-42
  11. Steel KT-40
  12. Eclipse KT-46
- \*Tones may vary.

## PRECAUTIONS



Harmful to the eyes. Irritating to skin. In case of ingestion, do not induce vomiting and seek immediate medical attention. In case of contact with eyes, apply plenty of water and see a doctor immediately. In contact with the skin, wash with water, then you can wash with soap.

## RISK CODE

Health	1
Flammability	0
Reactivity	0
Specific Risk	0
Personal Protection Equipment	E

## RESISTANCE TO COMPRESSION

From 3 to 5 mm	300 kg/cm <sup>2</sup>
----------------	------------------------

## RISK CODING

### Health – Flammability – Reactivity

4. Severe – 3. Serious – 2. Moderate  
1. Light – 0. Minimum.

### Personal Protection Equipment:

Gloves, goggles and dust mask.

