

Kimidye

Water Based Acrylic Dye

DESCRIPTION

Kimidye Kimikolor Water-Based Acrylic Dye decorates and brings life to new or old concrete surfaces, giving them a translucent and natural finish. It has excellent adhesion to concrete as well as resistance to abrasion and UV rays. It comes in a wide variety of shades that can be applied to any concrete surface such as floors, walls, columns, and others. Always easy to apply and versatile.

ADVANTAGES AND BENEFITS

- These are easy to apply with various techniques.
- Fast dry.
- Water-repelling and pearl finish.
- Variety of shades.
- They maintain the naturalness of the concrete.
- These can be applied to both wet and dry surfaces.
- They can be diluted with purified water, 1:1 ratio.

YIELD

One gallon of **Kimidye Kimikolor Water-Based Acrylic Dye** can cover approximately from 40 to 50 m².

Surface:

Trowel Finished Floors
Stamped Concrete
Brushed Concrete

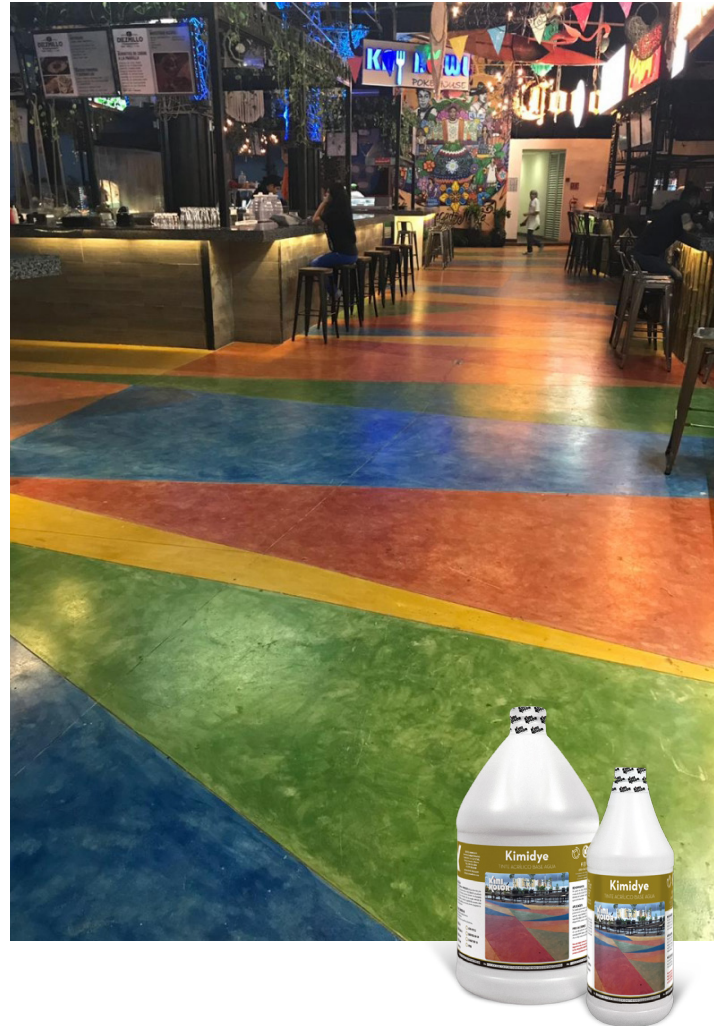
Yield:

Up to 10 m² x liter.
Up to 6 m² x liter.
Up to 5 m² x liter.

The data provided here is by hand. This can vary depending on the finish over which it is going to be applied, tonality and the desired effect.

MAINTENANCE

Maintenance should normally be given after a year or a year and a half. The sealer and any grease stains on the surface must be removed. Wash the surface with water and detergent to make it as clean as possible. Apply **Kimidye** on the surface if required,



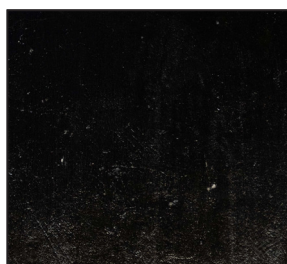
just one application to bring out the color. For greater protection and a longer life, it is important to seal the finish with **Kimikolor Kimiakril Acrylic Sealant Varnish** once the product is completely dry, this helps to prevent stains and can give it additional mechanical resistance.



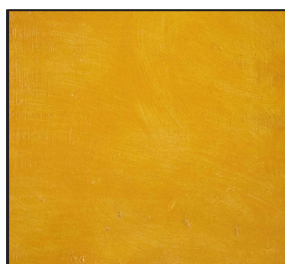
Kimidye Water Based Acrylic Dye



Kimidye Tones



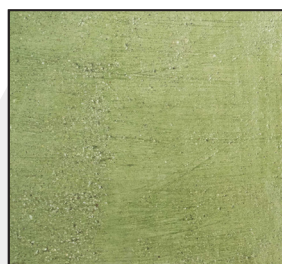
Negro KM-46



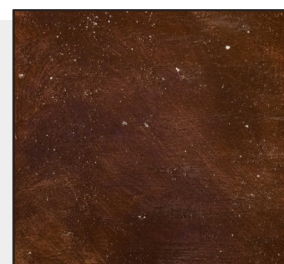
Amarillo KM-26



Sunset KM-14



Verde KM-48



Café KM-34



Naranja KM-28



Rojo KM-58

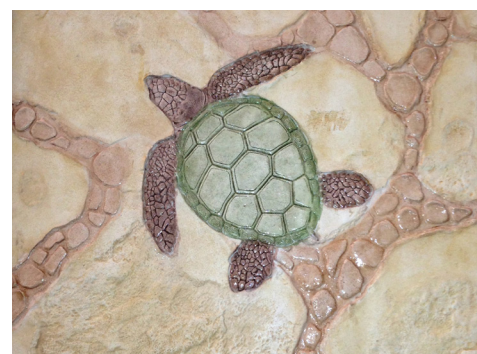
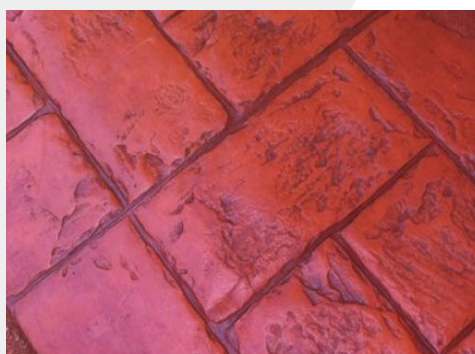
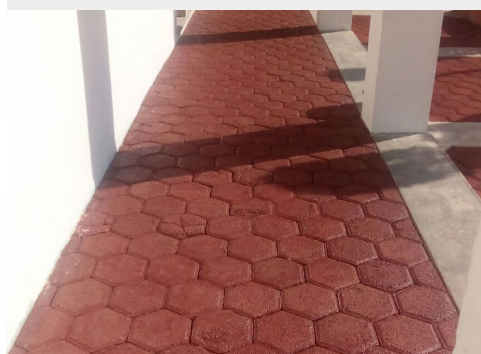


Azul KM-52

APPLICATION

- The surface must be free of dirt, sealers or waxes, loose paint, grease or oily substances.
- Remove sealants from the surface, it must be clean of grease and oil.
- Wash the surface with water and detergent to eliminate any dirt left after removing the sealant, then rinse with plenty of water. If the surface is completely polished, wash with acid to open the pores, diluted 10 to 1, then rinse the surface again with plenty of water and wait at least one day to avoid any reaction with the acid.

- Before applying Kimikolor Kimidye, shake it vigorously to homogenize the product. Due to its characteristics, the product can be diluted, 1:1 is recommended.
- We recommend that it be applied with a sprayer and sponge, depending on the finish you want to achieve.
- For best results, the first layer can be applied with a spray pump and conditioned with a sponge to finish. The second layer can be applied 15-25 minutes after laying down the first.
- Once the paint is applied, we recommend sealing it with *Kimikolor Kimiakril Acrylic Sealant Varnish*, either glossy or matte, to give the concrete a natural look.



PRECAUTIONS

Keep out of reach of children. Mild irritant to the skin, in case of ingestion do not induce vomiting and seek medical advice immediately. In case of contact with the eyes, apply a jet of water and go to the doctor. In contact with the skin, wash with water, then you can wash with soap.

RISK CODE

Health	1
Flammability	0
Reactivity	0
Specific Risk	0
Personal Protection Equipment	E

RISK CODING

Health- Flammability - Reactivity
4. Severe - 3. Serious - 2. Moderate
1. Light - 0. Minimum

Personal Protection Equipment:
Gloves, goggles and dust mask.