

Kimihard Color Hardener

DESCRIPTION

The Kimikolor Kimihard Color Hardener is a powdered material specially designed for pigmenting fresh concrete floors. It is a high-quality product which contains Portland Cement, Additives and Mineral Hardeners with a high silica content. Furthermore, the pigments used in its formula are highly resistant for both interiors and exteriors. In addition to superficially changing the tonality of concrete, the product gives a higher resistance to abrasion. It may be used for finishes in stamped concrete floors, polished concrete, stucco, and more.

ADVANTAGES AND BENEFITS

- The color is a cement-based mortar, minerals that give the color and silicas por resistance.
- It is ideal for use on stamped concrete, polished concrete, brushed concrete, and stucco.
- When applied, the properties of the color hardener are resistance to U.V. rays, resistance to abrasion and superficial hardness.
- The color does not need to be previously mixed with water, it should be sprinkled directly over the fresh concrete.
- It is ideal for stamping concrete items attached to traffic or pedestrian crossing that are intended to be finished in an esthetic and quality manner. It can be used on roads, walkways, parking lots, hotels, terraces, residential areas, garages, shopping malls and others.

YIELD

The yield will depend directly on the chosen tone, in the case of darker tones, the use is of approximately 2-3 kg/m² and for lighter tones it is 2.8-3.5 kg/m². This yield will depend on the type of finish to be created and on the amount of hardener applied on the surface. It is also important to consider the weather conditions and the type of concrete. For vehicular traffic, the recommended amount is at least 3.2 to 3.8 kg/m².



MAINTENANCE

For maintenance we recommend using *Kimikolor Kimiakril Acrylic Sealant Varnish* to protect surfaces and heighten the color. This sealer will help protect the floor and provide a dust separation from the concrete. It will also help protect the floor from wear by friction and gives a new look by reapplying once a year.



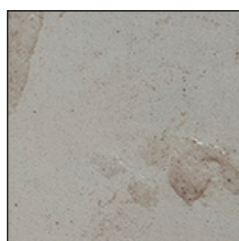
Kimihard Color Hardener



Kimihard Tones



Blanco Concha KH-10



Blanco Ostión KH-12



Sunset KH-14



Travertino KH-16



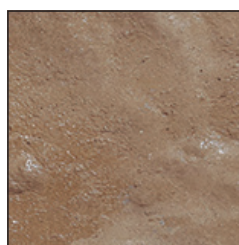
Dorado KH-18



Beige KH-20



Ámbar KH-22



Maple KH-24



Amarillo Tráfico KH-26



Mandarina KH-28



Tobacco KH-30



Santa Fe KH-32



Nuevo México KH-34



Río Verde KH-36



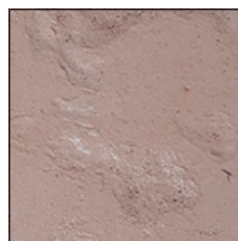
Plata KH-38



Steel KH-40



Gray KH-42



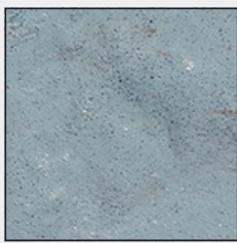
Plomo KH-44



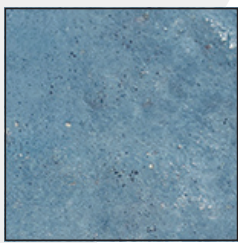
Eclipse KH-46



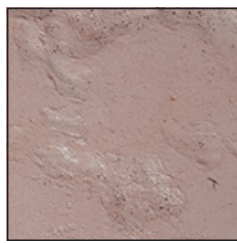
Jade KH-48



Azul Cielo KH-50



Azul Rey KH-52



Coral KH-54



Rojo Tabique KH-58

The colors are similar to those in the image, although these have tonal variations depending on the mold, release agent and concrete mixture.

*Blue and green tones are suggested for interior use as they may lose their intensity due to UV exposure.

APPLICATION PROCEDURE

- Prepare the surface that has been previously compacted, leveled and formed. An electro-welded mesh can be added as a reinforcement, and if required, in the polypropylene fiber concrete mix.
- Deposit the concrete over the previously prepared surface, with the help of a level tool and ruler, spread the concrete all over the surface.
- After casting the concrete, wait for the material to reach its initial point of setting or bleeding.
- For better yield results, wait for the water from the bleeding to evaporate (never apply **Kimikolor Kimihard Color Hardener** over water from bleeding). If water from bleeding does not present

itself over the concrete surface, you should wait for the concrete to harden slightly, and then sprinkle the color hardener.

- After the excess water has disappeared, proceed to sprinkle **Kimihard** over the concrete surface, once this is done it should be spread and integrated with a trowel seeking to cover the concrete. We recommend applying in 2 parts (2/3 first and 1/3 afterward to cover all parts where the color is not adequate; this should be done with fresh trowels and magnesium floats). Note: when opening the package, mix the product lightly with your hand to avoid clumps caused by humidity. If a polished, stucco or grated finish is desired, this would be your final step; once the concrete is set, it must be cut, washed, and later varnished with **Kimikolor Kimiakril Acrylic Sealant Varnish**.

Kimihard Color Endurecedor



■ Once a uniform surface is obtained, the following step is to sprinkle **Kimikolor Kimirelease Powder Release Agent** using a very thin layer over the whole surface (it is not necessary to over-saturate the area nor to cover or stroke with a trowel again. This layer is only needed to avoid adherence to the mold, to add a natural contrast and a different color).

■ Afterward, the molds must be placed over the concrete, this is done once the concrete is setting into a plastic state, meaning when a person can stand on the mold and it will not completely sink into the mix, this is the appropriate moment to stamp. It is important to remember to start stamping where the concrete was first poured. Apply even pressure over the mold to achieve the pattern. Note: for a better finish and result, use a rammer.

■ During the first 24 hours after casting the concrete, we recommend cutting with a disc according to the needs of the area. 36 to 72 hours after cutting, wash with water and brushes to remove any excess releasing agent and dust, trying not to remove the tonal effect of the releasing agent. Note: for greater effectiveness in the cuts, the minimum depth should be $\frac{1}{4}$ to $\frac{1}{2}$ to the thickness of the concrete, that is, for a 10 cm thick slab the joint should be 2.5 cm to 3.5 cm. The control joints in the concrete should be in an area with a width to depth ratio of approximately 20 or 25 to 1. That is, for a 10 cm thick slab, the cut should be approximately 2 to 2.5 cm.

■ For a final, more protective finish and more esthetic finish, we must seal after the concrete has dried completely; **Kimikolor Kimiakril Acrylic Sealant Varnish** glossy or matte is applied either with a roller, sprinkler, or brush. Note: the recommendation is to wait at least 24 hours before applying the sealer after casting.



PRECAUTIONS

This product is irritating to eyes and skin. In case of contact with eyes, rinse with abundant water and seek immediate medical attention. For contact with skin, wash with soap and abundant water.



TECHNICAL INFORMATION

Name of the test	Result	Specification
7-day resistance ASTM-C 942-99(2004)	46.4 Mpa (469 kg/cm ²)	17.2 minimum
28-day resistance ASTM-C 942-99(2004)	48.5 Mpa (485 km/cm ²)	34.5 minimum
Fluidity (ASTM-C 937-02)	113%	100-125%
Setting Time	6 Hours	8 maximum

RISK CODE

Health	1
Flammability	0
Reactivity	0
Specific Risk	0
Personal Protection Equipmen	E

RISK CODING

Health- Flammability - Reactivity
4. Severe - 3. Serious - 2. Moderate
1. Light - 0. Minimum
Personal Protection Equipment: Gloves, goggles and dust mask.